

Table of Content

Step 1: Unpack the Unit	2
Step 2: Install Disk Drives	4
Step 3: Connect to the Network	5
Step 4: Connect the Power	5
Step 5: Install the Software	5
Step 6: Setup the Unit.....	6
Step 7: Add Cameras.....	10
Step 8: Live View Function	13
Step 9: Set Recording.....	16
Step 10: Playback Function	18
Appendix A: Backup Function	21
Appendix B: Firmware Upgrade Function	24

Step 1: Unpack the Unit

This unit gift box contains the following items:

- The unit
- Quick Start Guide
- Screws for disk drives (1 package)
- Power cord
- Warranty card
- 12V DC power transformer (2 bay unit)
- CD with **Install Wizard**, **Backup**, **Live View**, and **Playback** application, user manual, and quick start guide

Warning



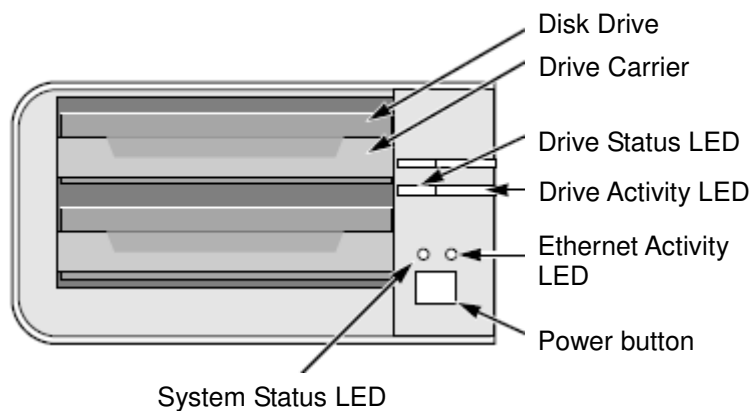
The electronic components within the unit are sensitive to be damaged from Electro-Static Discharge (ESD). Please take precautions at all time when handling the unit or its subassemblies.

Important

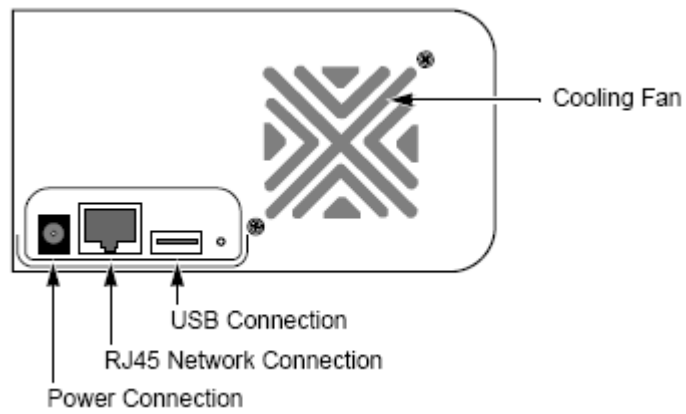


To configure the unit, you must install the software onto a desktop/ laptop running Windows Vista, 2003, XP Professional, or 2000.

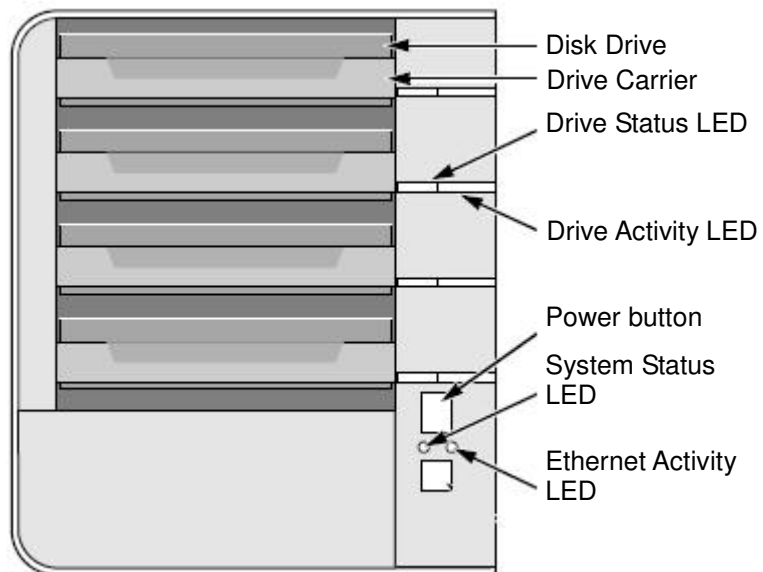
2 bay unit (4 channels) front view



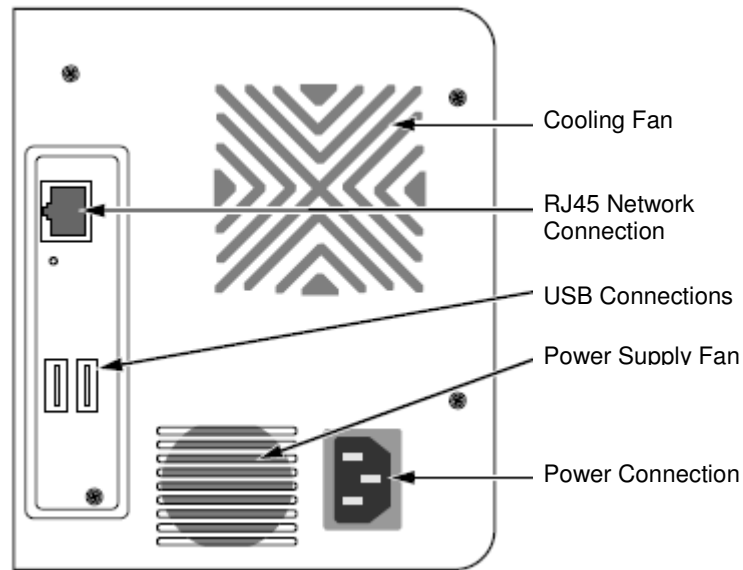
2 bay unit (4 channels) rear view



4 bay unit (8 channels) front view



4 bay unit (8 channels) rear view



Step 2: Install Disk Drives

You can populate this unit with SATA 1.5 Gb/s or 3.0 Gb/s disk drives. For optimal performance, install disk drives of the same model and capacity. Your disk drives will become a RAID Volume on this unit.

1. Open the lid on the front of the unit enclosure.
2. Pull a disk drive carrier from the enclosure. See the front view figure.
3. Carefully lay the disk drive into the drive carrier, making the screw holes on the sides of the carrier aligning with the screw holes in the drive.
4. Insert the screws through the holes in the drive carrier and into the sides of the disk drive.
 - Install only the counter-sink screws supplied with the unit.
 - Install four screws per disk drive.
 - Snug each screw. Be careful not to over-tighten.
5. Reinstall the drive carrier into the unit enclosure.
6. Repeat step 2 through 5 for the other disk drive.
7. Close the lid on the front of the unit.

Step 3: Connect to the Network

1. Attach one end of the network cable to the RJ45 network connection. See the rear view figure.
2. Attach the other end of the network cable to your Ethernet hub or switch.

Important



If there are multiple networks at your facility, note the network to which you connect the unit. You will need this information during the setup process.

Step 4: Connect the Power

1. Attach the power cord from the power source to the power adapter.
2. Connect the power adapter to the back of the unit enclosure. See the rear view figure.
3. On the front of the unit, press the power button. See the front view figure.

It takes about a minute to boot the unit. After fully booted:

- The System Status LED turns green. See the front view figure.
- The buzzer beeps one time.

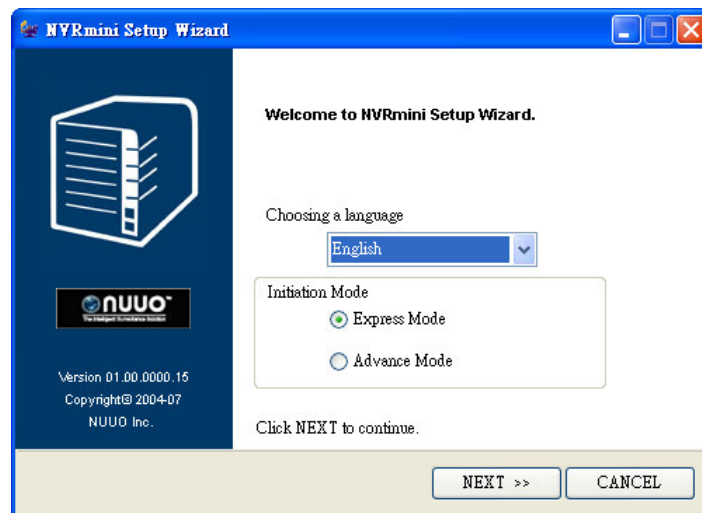
Step 5: Install the Software

1. Insert the CD into your CDROM.
2. Double-click **Setup.exe** to begin installation.
3. Click the **Next** button to go on installation.
4. Click the “I accept the terms of the license agreement” option, and then click the **Next** button.
5. Insert your “User Name” and “Company Name” then click the **Next** button.
6. Select the setup type, and then click the **Next** button.
7. Click the **Install** button to proceed with installation.
8. When above-mentioned installation processes are finished, a final installation screen appears. Click the **Finish** button to close the installer.

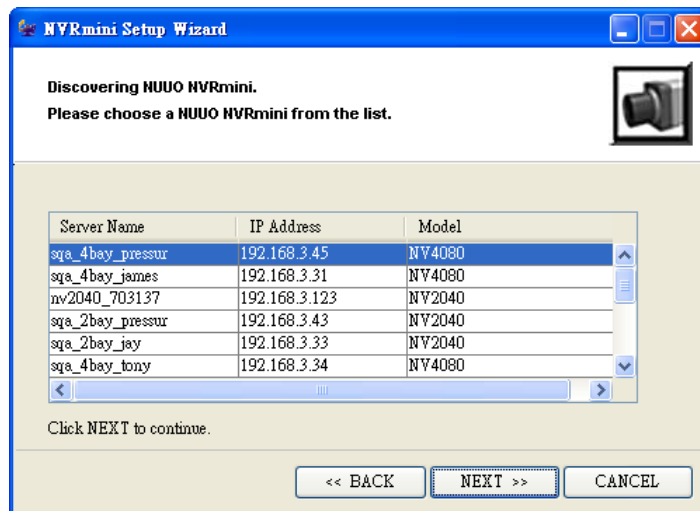
Step 6: Setup the Unit

The software **Install Wizard** performs the setup procedures on your unit. After the procedure, you can begin using this unit.

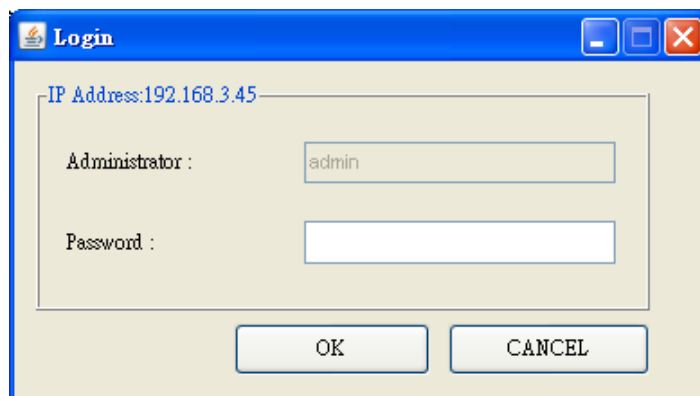
1. Go to Start > NUUO NVRmini > Install Wizard.
2. This program will show the default language setting and initiation mode.
3. Choose preferred language and initiation mode, and then click the **Next** button.



- **Express Mode:** you don't need to set the date, time, network settings, and RAID level. (After step 5, jump to step 9 directly.)
 - **Advance Mode:** you need to set your specific date, time, and network settings.
4. **Install Wizard** program will search all the units on the internet right now. Choose one of them, and then click the **Next** button.



5. Insert the password, and then click the **OK** button.

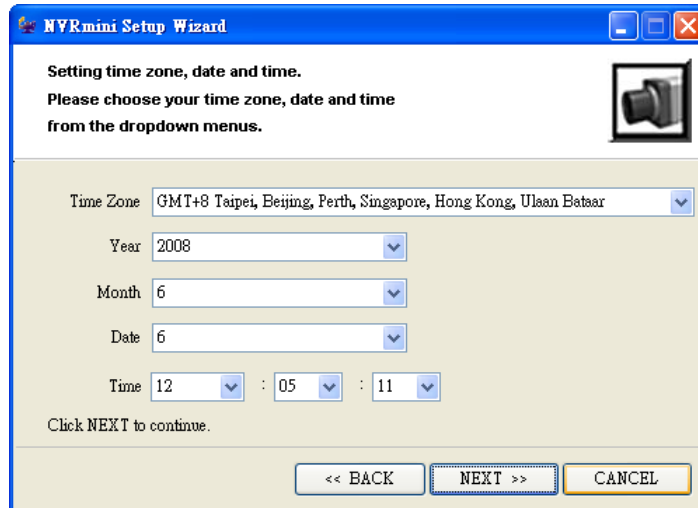


Note

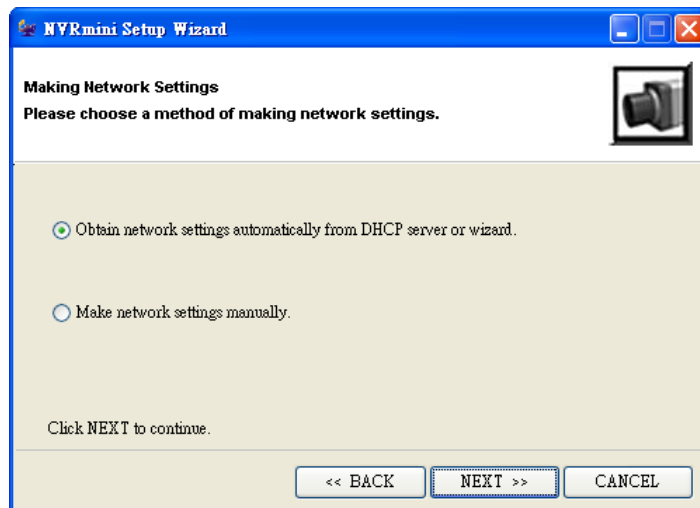


The default password of Administrator is "admin".

6. Set the time zone, date, and time, and then click the **Next** button.

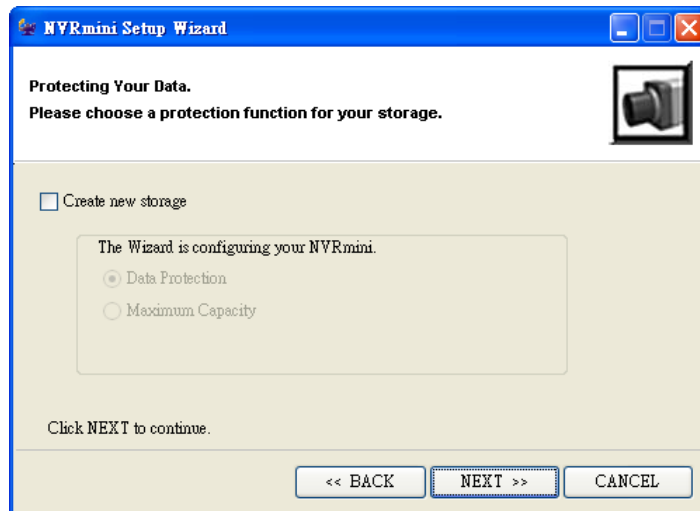


7. Make the network settings, and then click the **Next** button.



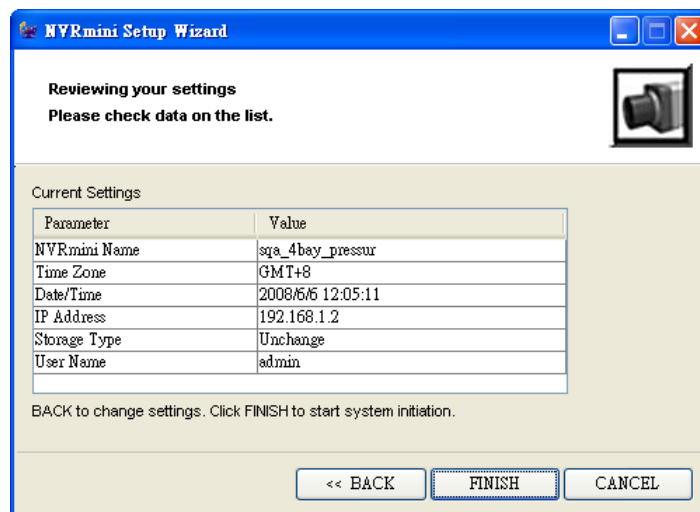
- **Obtain network settings automatically from DHCP server or wizard:** apply the settings, such as IP, netmask, gateway, DNS which are generated from DHCP server.
- **Make network settings manually:** make your specific settings.

8. If you need to set a new disk(s), check the “Create new storage” option. After checking, click the **Next** button.



- **Data Protection:** set the RAID level to RAID 1 (2 bay). Set the RAID level to RAID 0 (4 bay).
- **Maximum Capacity:** set the RAID level to RAID 5 (2 bay). Set the RAID level to RAID 0 (4 bay).

9. Review your settings. If the settings are correct, click the **Finish** button to finish this setting process.



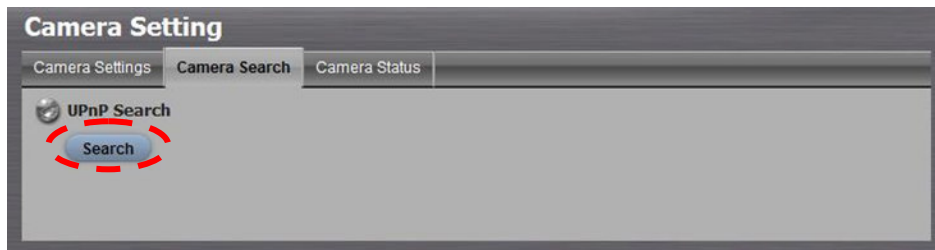
Caution




Once completing the settings of the unit, the unit will start working. In order to let your unit be stable, do not pull any disks out when the system is running.


Step 7: Add Cameras

- Add UPnP Cameras
 1. Open Internet Explorer and login the unit.
 2. Click **IP Camera/ Camera Settings**.
 3. Click the **Camera Search** tab.
 4. Click the **Search** button to search UPnP cameras.



5. The system will list all the available cameras at this moment. Click the icon  to add this camera into your camera list.



6. After clicking the icon , the camera setting page will pop-up. Click the item which you want to add a camera.
7. Insert the camera name, user name, and password of the camera.

Settings | Live view | Playback | Logout

Camera Setting

Add IP Camera X

Camera Name	<input type="text"/>		
IP Address	<input type="text"/>	Port	80
User Name	<input type="text"/>	Password	<input type="text"/>
Add to channel	1 <input type="button" value="v"/>	Protocol	HTTP
Vendor	<input type="text"/>	Model	<input type="text"/>

Current Camera Settings

Channel	Camera Name	IP Addr	Vendor	Model
1			-- none --	-- none --
2			-- none --	-- none --
3			-- none --	-- none --
4			-- none --	-- none --
5			-- none --	-- none --
6			-- none --	-- none --
7			-- none --	-- none --
8			-- none --	-- none --

Note



Some cameras will limit the login authority to the administrator. In this condition, you need to change the login user name and password to the administrator's to login those cameras.

8. Click the **Add** button to add it.
9. After clicking the **Add** button, the updated camera list will be displayed in the **Camera Settings** tab.

Camera List

Index	Camera Name	Address	Port	Vendor	Model
1	Camera Name	IP Address	80	Vendor	Model Name
2			80	-- none --	-- none --
3			80	-- none --	-- none --
4			80	-- none --	-- none --
5			80	-- none --	-- none --
6			80	-- none --	-- none --
7			80	-- none --	-- none --
8			80	-- none --	-- none --

10. Repeat step 5 through 8 to add other cameras in your list.

- Add Cameras without UPnP function

1. Open Internet Explorer and login the unit.
2. Click **IP Camera/ Camera Settings**.
3. Click the **Camera Settings** tab, and the camera list will be displayed in the bottom of the page.
4. Click the item which you want to add a camera.

Index	Camera Name	Address	Port	Vendor	Model
1			80	-- none --	-- none --
2			80	-- none --	-- none --
3			80	-- none --	-- none --
4			80	-- none --	-- none --
5			80	-- none --	-- none --
6			80	-- none --	-- none --
7			80	-- none --	-- none --
8			80	-- none --	-- none --

5. Insert the information of this camera on the top of the page.

Camera Settings

Camera Settings | Camera Search

Camera Settings

Camera Name:

Address: | Port:

User Name: | Password:

Video Channel: | Protocol: TCP UDP HTTP

Vendor: | Model:

- **Camera name**: name this camera.
- **Address**: the IP address.
- **Port**: the transmission port.
- **User name**: login user name.
- **Password**: login password.
- **Camera Channel**: the number of cameras this video server supports.
- **Protocol**: data transmission protocol.
- **Vendor**: camera vendor name.
- **Model**: camera model name.

Note



Some cameras will limit the login authority to the administrator. In this condition, you need to change the login user name and password to the administrator's to login those cameras.

6. Click the **Save** button.

- **Save**: save the information of this camera.
- **Reset**: return to the latest saved settings of the selected camera.
- **Auto Detection**: after inserting IP address, port, user name, and password, click this button to automatically find out all the information of this camera. (such as Camera Channel, Protocol, Vendor, Model)

7. Repeat step 4 through 6 to add other cameras in your list.

Step 8: Live View Function

There are two ways to implement the live view function: through Internet Explorer or through **Remote Live Viewer** application.

- Internet Explorer
 1. Open Internet Explorer and login the unit.
 2. Set the cameras.
 3. Click the **Live view** button on the top of the page.
 4. Select a camera(s) from the camera list on the right and then drag it to where you wish the image to be displayed.

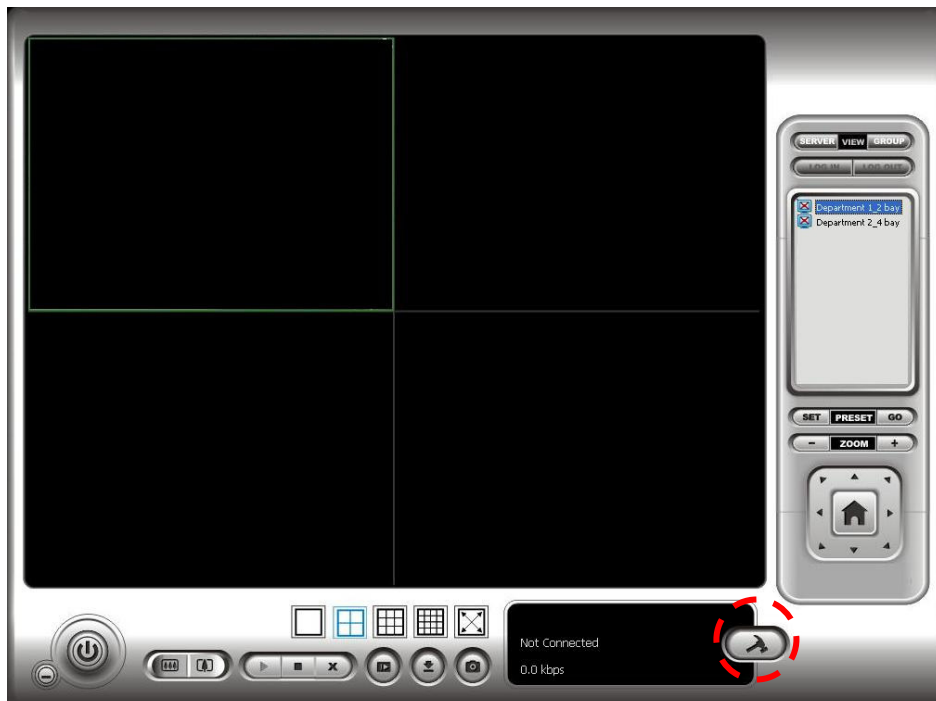


Important

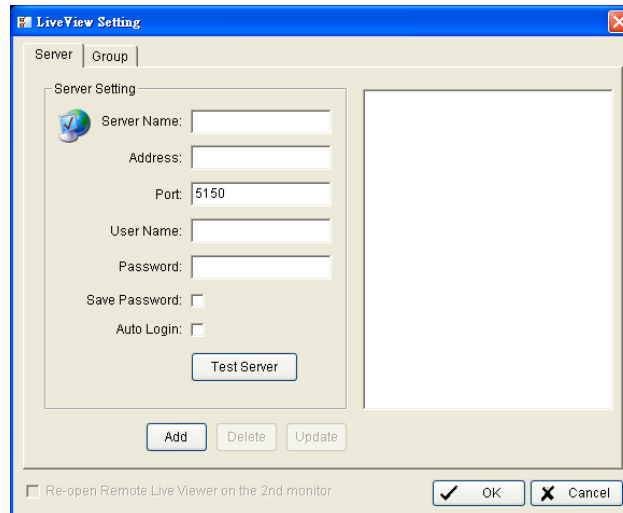


At the time of running Internet Explorer, not to use the function "Open in New Window" for browser stability purpose.

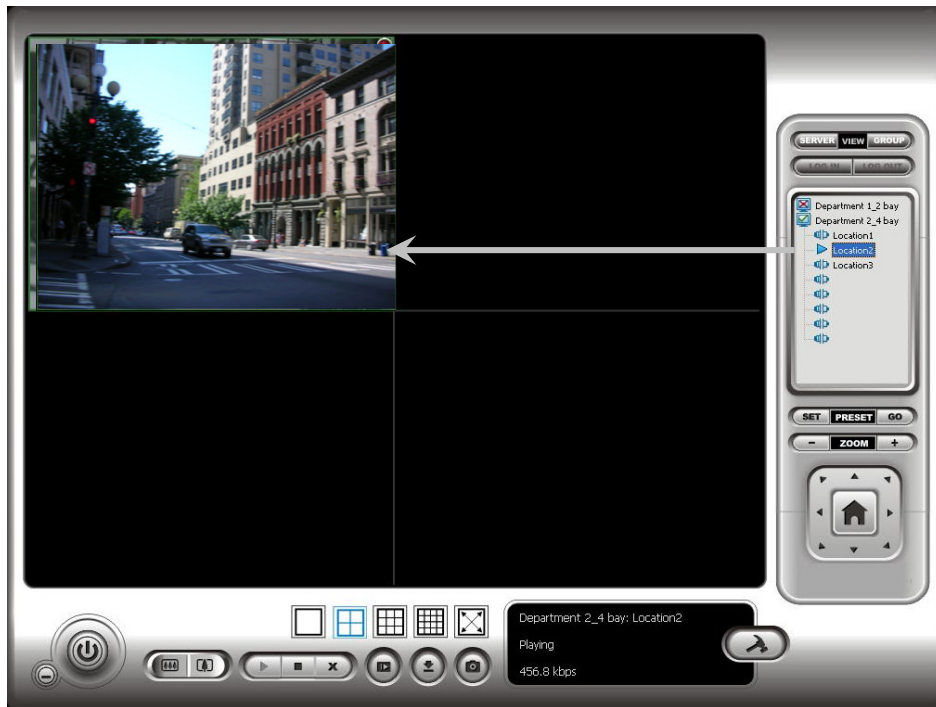
- Remote Live Viewer Application
 1. Go to Start > NUUO NVRmini > Remote Live Viewer.
 2. Click the **Site Setup** button.



3. Insert the unit name.

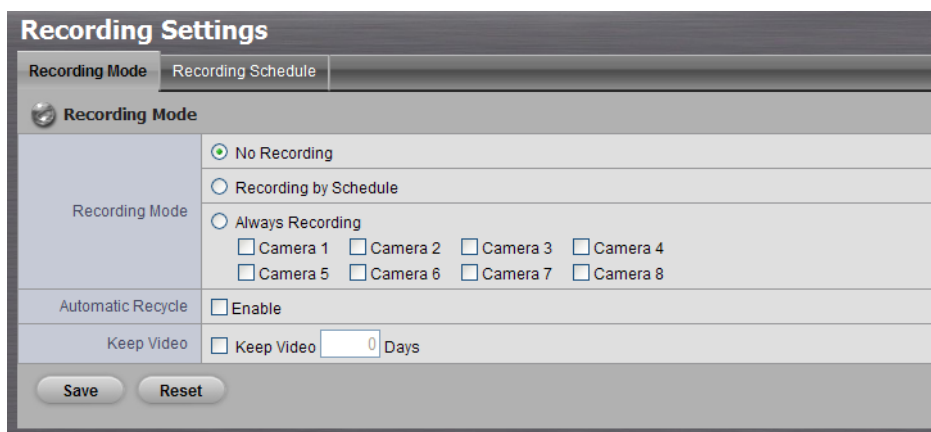


4. Insert the IP address.
5. Modify the port if necessary.
6. Insert the user name.
7. Insert the password.
8. Check the **Save Password/ Auto Login** option.
9. Click the **Test Server** button to test the connection between the local application and the remote unit.
10. Click the **Add** button to add this unit into your remote server list.
11. Click the **OK** button.
12. Click the unit you wish to access in your remote server list.
13. Click the **Log In** button to access your unit.
14. Select a camera(s) from the camera list on the right and then drag it to where you wish the image to be displayed.



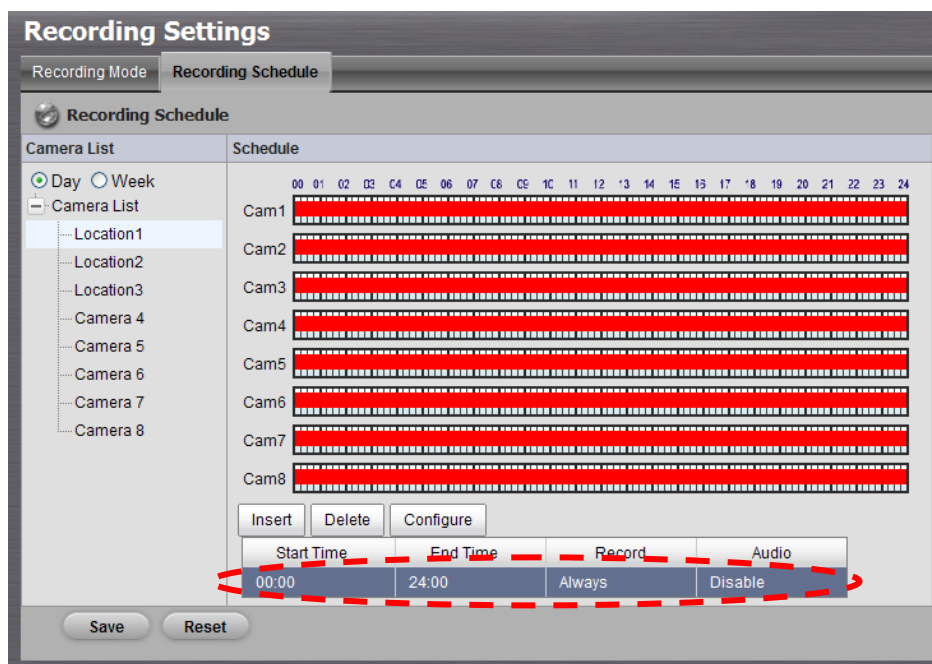
Step 9: Set Recording

1. Open Internet Explorer and login the unit.
2. Click **Recording & Event/ Recording settings**.
3. Click the **Recording Mode** tab.
4. If selecting **Always Recording**, the chosen cameras will begin to record immediately.

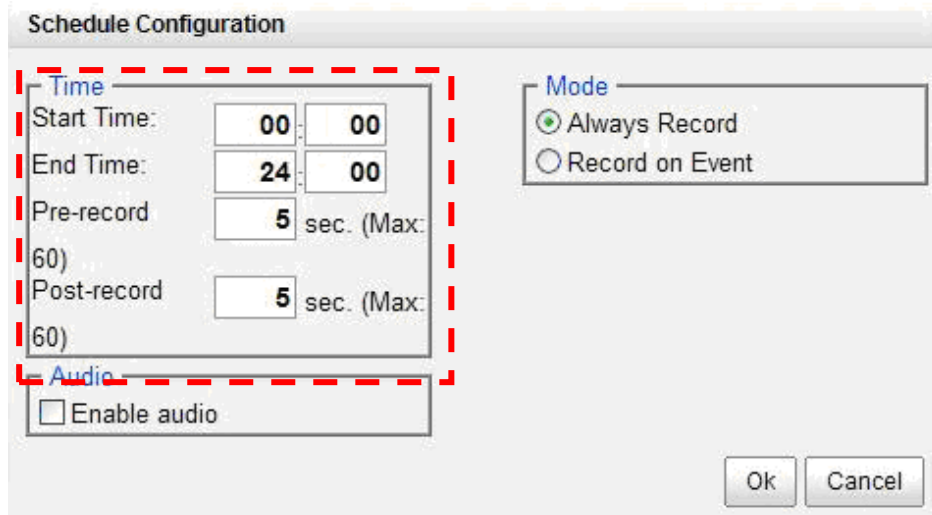


- **No Recording**: turn off the recording.
- **Recording by Schedule**: recording by schedule.
- **Always Recording**: turn on the chosen cameras to record always.
- **Automatic Recycle**: check the **Enable** option to recycle disk space

- automatically when the disk space is full.
 - **Keep Video**: set a period during which the recorded video clips will be kept intact.
5. If selecting **Recording by Schedule**, you need to set the schedules of the cameras.
 6. Click **Recording & Event/ Recording settings**.
 7. Click the **Recording Schedule** tab.
 8. Click the schedule of the camera which needs to be modified.
 9. Click the column in the bottom of the page.



- **Insert**: insert new schedules.
 - **Delete**: delete the selected schedule.
 - **Configure**: modify the schedule and recording mode setting.
10. The default setting of the camera's recording schedule is from 00:00 to 24:00. If you want to modify the time slot, click the **Configure** button to modify the default setting first.



11. Choose the recording mode.

- **Always Record**: always record.
- **Record on Event**: record when event triggered. The event can be triggered by **Motion** or **Digital input**.

12. If you want to add another new schedule, click the **Insert** button to add a new one.

13. Repeat step 12 to add new schedules for the selected camera.

14. Repeat step 8 through 12 to set other cameras.

15. Click the **Save** button.

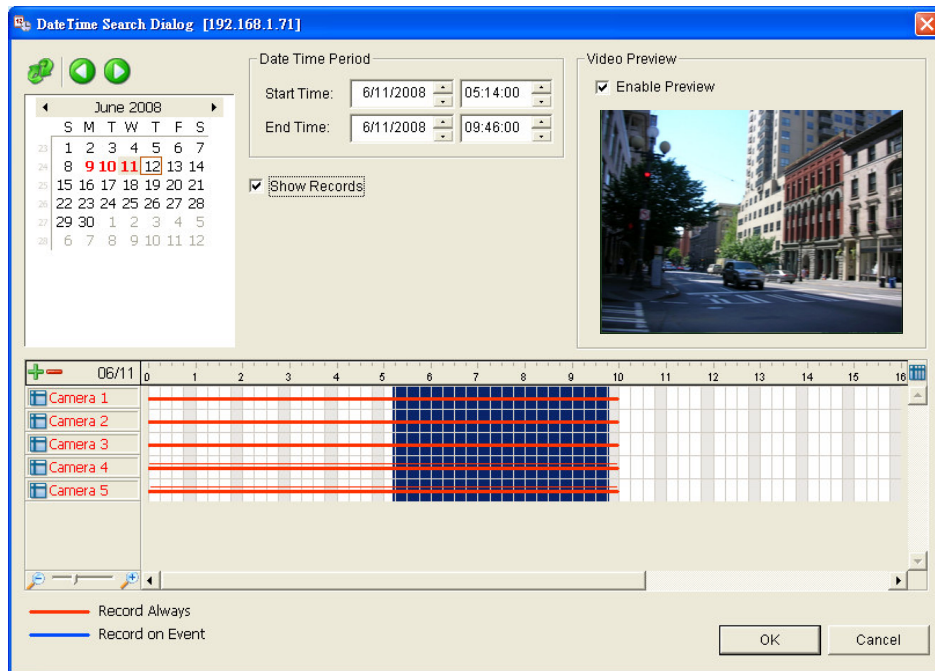
Step 10: Playback Function

There are two ways to implement the playback function: through Internet Explorer or through **Playback System** application.

- Internet Explorer

1. Open Internet Explorer and login the unit.
2. Click the **Playback** button on the top of the page.
3. Click the **Open Record** button.
4. The Record Display Window will show the information of the available video clips. Select the date you want to search the record from. See user manual for more details about this Record Display Window.
5. Highlight the video records that you want to review. See user manual for

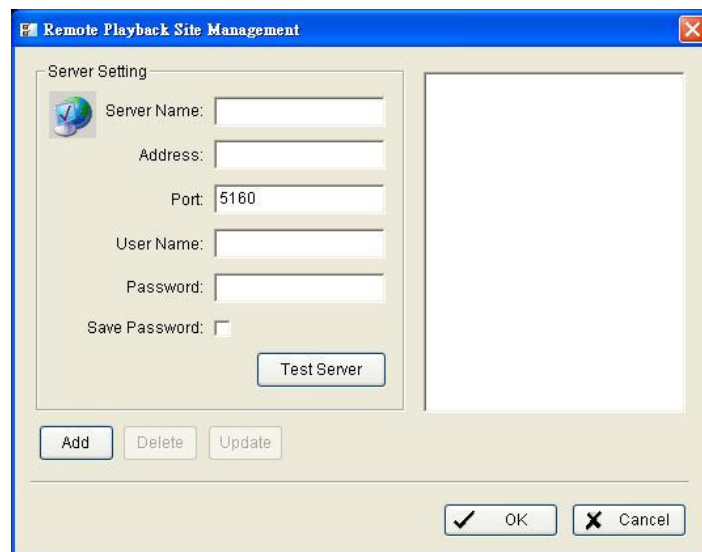
more details.




6. Click the **OK** button.

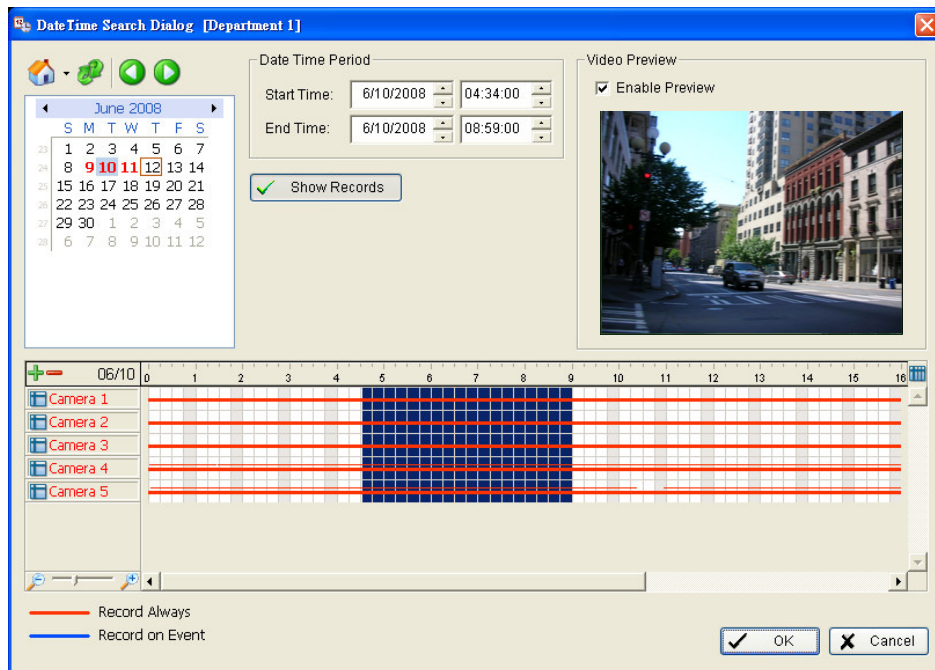
- Playback System Application

1. Go to Start > NUUO NVRmini > Playback System.
2. Click the **Remote Server** button.



3. Insert the name of your unit.

4. Insert the IP address of that unit.
5. Modify the port if necessary.
6. Insert the user name.
7. Insert the password.
8. Check the **Save Password** option.
9. Click the **Test Server** button to test the connection between the local application and the remote unit.
10. Click the **Add** button to add this unit into the remote server list.
11. Click the **OK** button.
12. Click the **Open Record** button.
13. Click the icon  on the top of the Date-Time Panel to obtain the Remote Playback Site Management dialog, and then select the server you want to access.
7. The Record Display Window will show the information of the available video clips. Select the date you want to search the record from. See user manual for more details about this Record Display Window.
8. Highlight the video records that you want to review. See user manual for more details.



14. Click the **OK** button.

Appendix A: Backup Function

There are three ways to backup your files: through Internet Explorer, through **Playback System** application, or through **Backup System** application.

- Internet Explorer

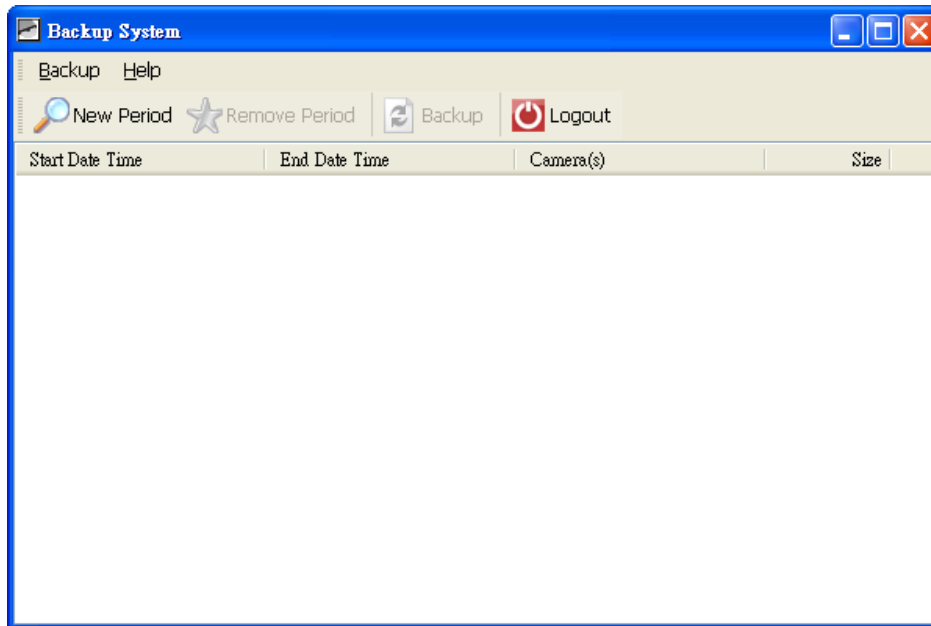
1. Open Internet Explorer and login the unit.
2. Click the **Open Record** button to select data.
3. Click the **Backup** button.
4. Set the Start Time and End Time you want to backup.
5. Select the cameras you want to backup.
6. Select the directory you want to save the backup data.
7. Click the **Backup** button.

- Playback System Application

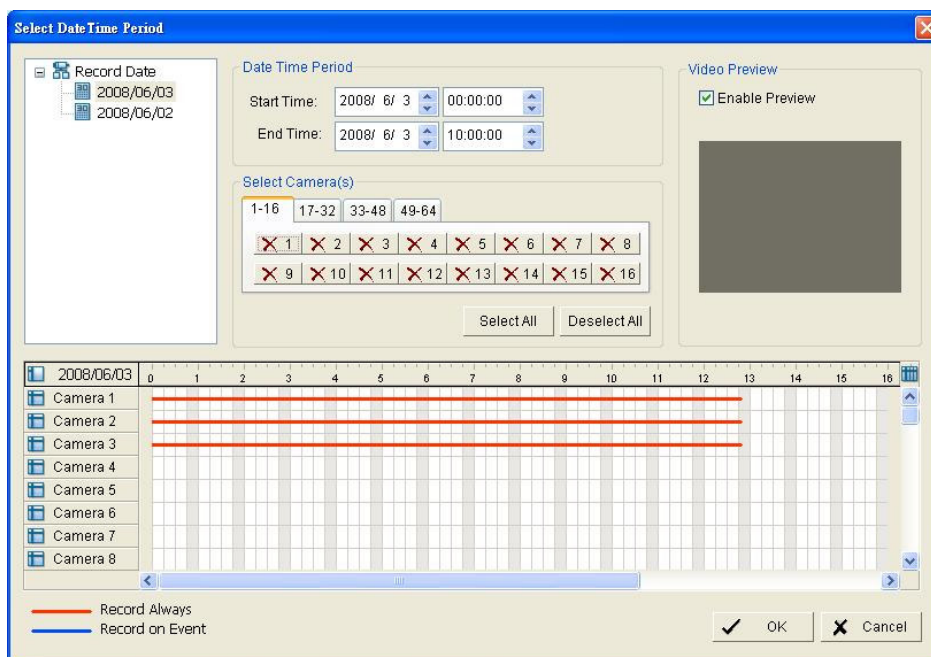
1. Go to Start > NUUO NVRmini > Playback System.
2. Click the **Open Record** button to select data.
3. Click the **Backup** button.
4. Set the Start Time and End Time you want to backup.
5. Select the cameras you want to backup.
6. Select the directory you want to save the backup data.
7. Click the **Backup** button.

- Backup System Application

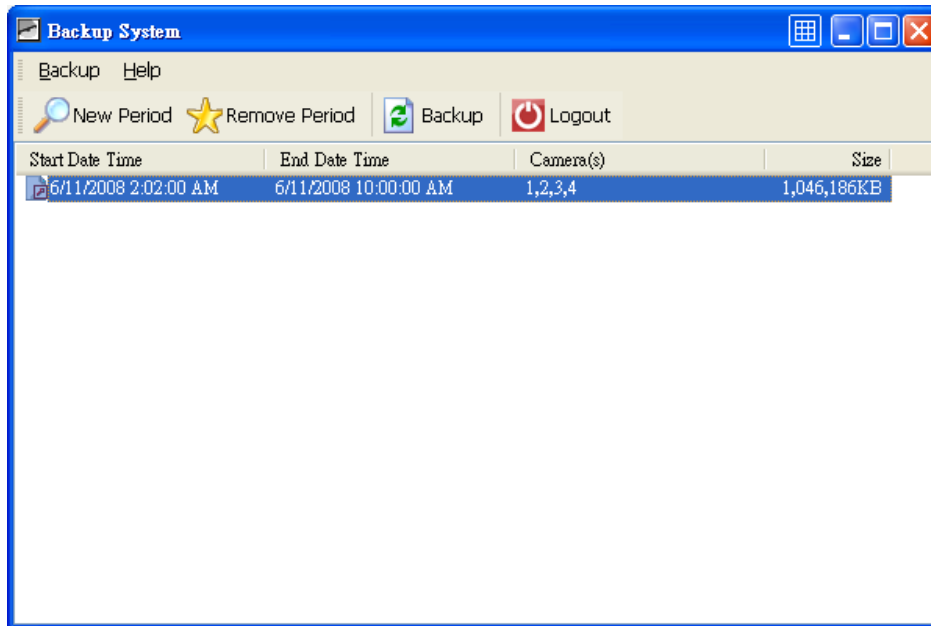
1. Go to Start > NUUO NVRmini > Backup System.
2. Insert the IP address of your unit in the login window.
3. Insert the user name.
4. Insert the password.
5. Click the **OK** button.
6. Click the **New Period** button.



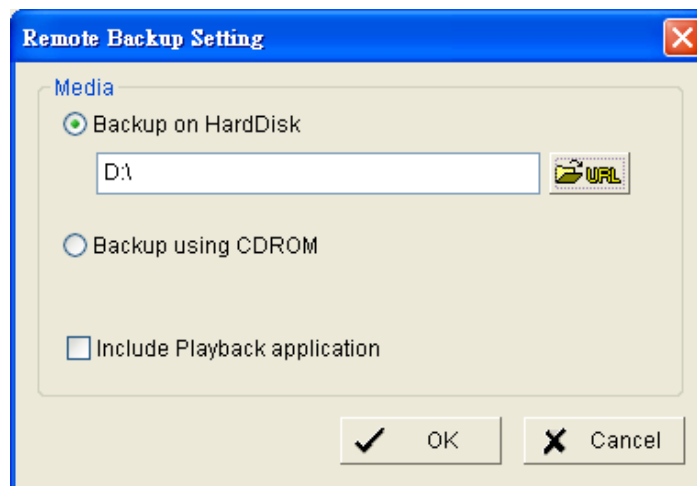
7. Select the record date.



8. Set the Start Time and End Time you want to backup. (or highlight the video records which you want to backup)
9. Select the cameras you want to backup.
10. Click the **OK** button.
11. Select the time slot which you want to backup.

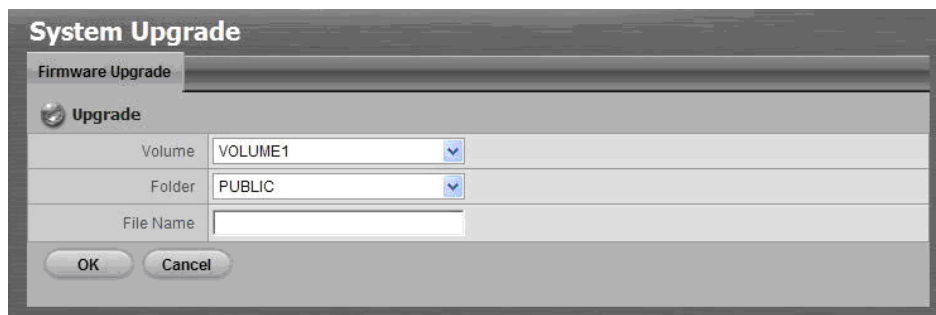


12. Click the **Backup** button.
13. Select the way and directory you want to save the backup data.
14. Check the **Include Playback application** option, which will add **Playback** application into the backup folder.
15. Click the **OK** button.



Appendix B: Firmware Upgrade Function

1. Find your unit through Windows Explorer (insert “\\” plus the IP address of your unit).
2. Use the administrator’s ID and password to login.
3. Put the update file into the folder “public” in your unit.
4. Open Internet Explorer and login the unit.
5. Click **System/ System Upgrade**.
6. Click the **Firmware Upgrade** tab.



7. Choose the volume.
8. Choose the folder “public”.
9. Insert the entire file name, including the extension name.
10. Click the **OK** button.
11. The system will begin the upgrade process.
12. After upgrade, the system will reboot. You need to re-access the unit again.