

IP7160

Fixed Network Camera

2MP • Multiple Streams • SD/SDHC Card



VIVOTEK IP7160 is a cost-effective 2-megapixel network camera ideal for locations and situations requiring accurate identification such as banks and airports. With a 2-megapixel sensor, the IP7160 can deliver extremely clear and detailed images for accurate video content analysis. Additionally, the camera can capture a more comprehensive area of a scene than a standard VGA camera, significantly reducing the number of cameras required.

The IP7160 also supports tamper detection, which detects data loss from camera tampering in real-time. When the camera is blocked, redirected, or spray-painted, security staff will be alerted immediately in accordance with the camera settings. In order to make more efficient use of bandwidth by reducing transmission of unnecessary data, the IP7160 features a SD/SDHC card slot for on-board storage, which also prevents data loss due to network disconnection. The integrated 802.3af compliant PoE function reduces cabling problems, making the IP7160 a cost-effective surveillance solution.

With other advanced features including simultaneous multiple streams, two-way audio via SIP protocol, and HTTPS encrypted data transmission, the IP7160 proves to be an affordable high-resolution surveillance system.

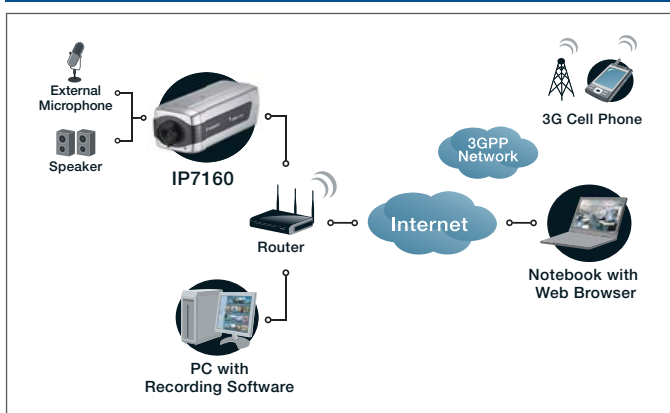
Features

- > 2-megapixel CMOS Sensor
- > Auto-iris Lens (Optional)
- > Real-time MPEG-4 and MJPEG Compression (Dual Codec)
- > Multiple Streams Simultaneously
- > ePTZ for Data Efficiency
- > Activity Adaptive Streaming for Dynamic Frame Rate Control
- > Tamper Detection for Unauthorized Changes
- > 3GPP Mobile Surveillance
- > Built-in 802.3af Compliant PoE
- > Two-way Audio via SIP Protocol
- > Built-in SD/SDHC Card Slot for On-board Storage
- > Includes Free Standard 32-CH ST7501 Central Management Software

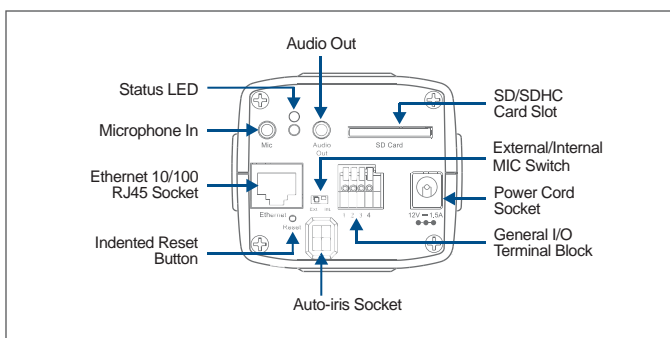
System	<ul style="list-style-type: none"> CPU: Mozart 120 SoC Flash: 16MB RAM: 128MB + 128MB Embedded OS: Linux 2.6
Lens	<ul style="list-style-type: none"> CS-mount, f = 4.2 mm, F1.8, Fixed
Angle of View	<ul style="list-style-type: none"> 71.2° (horizontal)
Shutter Time	<ul style="list-style-type: none"> 1/5 sec. to 1/40,000 sec.
Image Sensor	<ul style="list-style-type: none"> 1/3.2" CMOS sensor in 1600x1200 resolution
Minimum Illumination	<ul style="list-style-type: none"> 0.3 Lux / F1.8
Video	<ul style="list-style-type: none"> Compression: MJPEG & MPEG-4 Streaming: <ul style="list-style-type: none"> Simultaneous multiple streams MPEG-4 streaming over UDP, TCP, HTTP or HTTPS MPEG-4 multicast streaming MJPEG streaming over HTTP or HTTPS Supports activity adaptive streaming for dynamic frame rate control Supports ePTZ for data efficiency Supports 3GPP mobile surveillance Frame rates: <ul style="list-style-type: none"> MPEG-4: up to 30 fps at 800x600 up to 10 fps at 1600x1200 MJPEG: up to 30 fps at 800x600 up to 15 fps at 1600x1200
Image Settings	<ul style="list-style-type: none"> Adjustable image size, quality and bit rate Time stamp and text caption overlay Flip & mirror Configurable brightness, contrast, saturation, sharpness, white balance and exposure AGC, AWB, AES BLC (Backlight Compensation) Supports privacy masks
Audio	<ul style="list-style-type: none"> Compression: <ul style="list-style-type: none"> GSM-AMR speech encoding, bit rate: 4.75 kbps to 12.2 kbps MPEG-4 AAC audio encoding, bit rate: 16 kbps to 128 kbps Interface: <ul style="list-style-type: none"> Built-in microphone External microphone input Audio output External/Internal microphone switch Supports two-way audio via SIP protocol Supports audio mute
Networking	<ul style="list-style-type: none"> 10/100 Mbps Ethernet, RJ-45 Protocols: IPv4, IPv6, TCP/IP, HTTP, HTTPS, UPnP, RTSP/RTP/RTCP, IGMP, SMTP, FTP, DHCP, NTP, DNS, DDNS, PPPoE, CoS, QoS, SNMP and 802.1X
Alarm and Event Management	<ul style="list-style-type: none"> Triple-window video motion detection Tamper detection One D/I and one D/O for external sensor and alarm Event notification using HTTP, SMTP or FTP Local recording of MP4 file
On-board Storage	<ul style="list-style-type: none"> SD/SDHC card slot Stores snapshots and video clips
Security	<ul style="list-style-type: none"> Multi-level user access with password protection IP address filtering HTTPS encrypted data transmission 802.1X port-based authentication for network protection
Users	<ul style="list-style-type: none"> Live viewing for up to 10 clients
Dimension	<ul style="list-style-type: none"> 154 mm (D) x 72 mm (W) x 62 mm (H)
Weight	<ul style="list-style-type: none"> 623 g
LED Indicator	<ul style="list-style-type: none"> System power and status indicator System activity and network link indicator

Power	<ul style="list-style-type: none"> 12V DC Power consumption: Max. 7 W 802.3af compliant Power-over-Ethernet
Approvals	<ul style="list-style-type: none"> CE, LVD, FCC, VCCI, C-Tick
Operating Environments	<ul style="list-style-type: none"> Temperature: 0 ~ 50 °C (32 ~ 122 °F) Humidity: 90% RH
Viewing System Requirements	<ul style="list-style-type: none"> OS: Microsoft Windows 2000/XP/Vista Browser: Mozilla Firefox, Internet Explorer 6.x or above Cell phone: 3GPP player Real Player: 10.5 or above Quick Time: 6.5 or above
Installation, Management, and Maintenance	<ul style="list-style-type: none"> Installation Wizard 2 32-CH ST7501 central management software Supports firmware upgrade
Applications	<ul style="list-style-type: none"> SDK available for application development and system integration
Warranty	<ul style="list-style-type: none"> 24 months

System Overview



External View



Accessories



All specifications are subject to change without notice. Copyright ©2009 VIVOTEK INC. All rights reserved.

Distributed by:



6F, No.192, Lien-Cheng Rd., Chung-Ho, Taipei County, Taiwan
Tel: +886 2 8245 5282 | Fax: +886 2 8245 5532 | E-mail: sales@vivotek.com

VIVOTEK USA, INC.

470 Lakeside Drive Suite C, Sunnyvale, CA 94085 USA
Tel: 408-773-8686 | Fax: 408-773-8298 | E-mail: salesusa@vivotek.com